



Plate IA. *Kachin/Naga:* **Top:** Necklace of *khaji*, heirloom beads of the Kachin. Orange Indo-Pacific beads predominate (author's collection). **Bottom:** Detailed view (all photos by author unless otherwise noted).

Plate IC. *Kachin/Naga:* **Top:** The *khaji* necklaces seen in Pl. IB. **Bottom:** Detail of the above necklaces. Note the white chank-shell and fancy Venetian beads.



Plate IB. *Kachin/Naga:* Prestigious double-strand necklace of *khaji* worn with a second single strand in Putao, Kachin State. The larger *khaji* beads are over 1.0 cm in diameter. The white cylindrical beads are of chank shell.

Plate ID. *Kachin/Naga:* **Top:** Necklace of imitation *khaji* beads; the central bead is bone. Myitkyina, Kachin State, Burma (author's collection). **Bottom:** Imitation *khaji* detail.

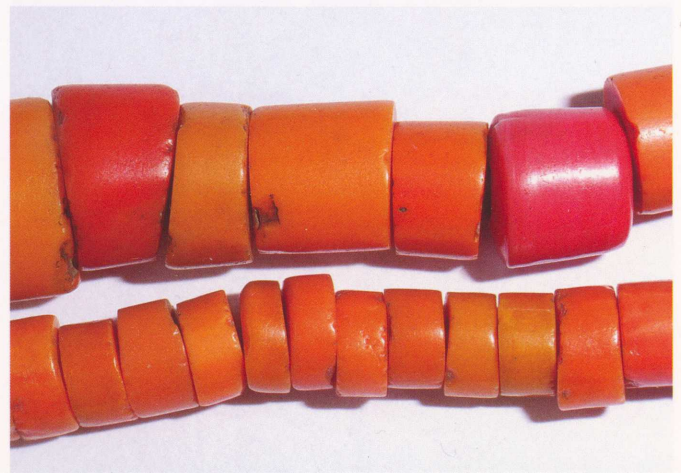




Plate IIA. *Kachin/Naga:* **Top:** Necklace with *khaji* of various sizes, red Venetian beads, and some darker *khaji* imitations. Langtao village, Kachin State, Burma, 2007. **Bottom:** The much-worn *khaji* flanked by imitations.

Plate IIC. *Kachin/Naga:* **Top:** Naga necklace resembling *khaji* necklaces of the Kachin. The large white glass beads imitate chank shell (author's collection). **Bottom:** Detailed view.

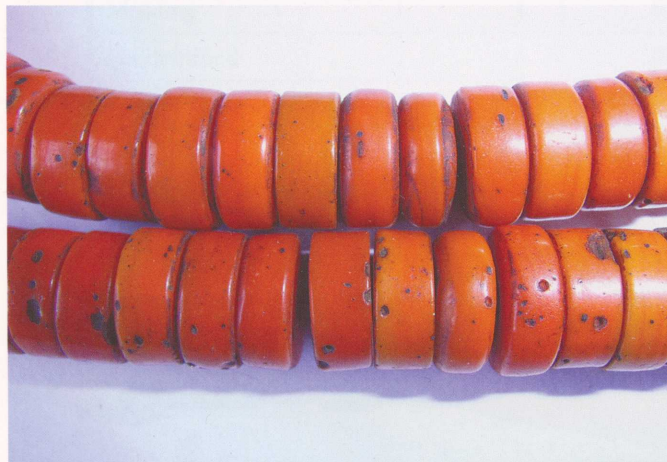


Plate IIB. *Kachin/Naga:* **Top:** Naga necklaces of various types collected in the 1970s and 1980s (Gertrude Anschel collection). **Bottom:** *Khaji* necklace with chank-shell beads and discoid; Putao area, Kachin State, Upper Burma.

Plate IID. *Kachin/Naga:* Konyak Naga choker (above) and bib necklace (below) incorporating *deo moni/nupti* (Harry L. and Tiala Marsosang Neufeld collection; courtesy Harry Neufeld).





Plate IIIA. *Kachin/Naga:* **Top:** Prestigious Naga necklace (*Wakching mala*) with *deo moni/nupti* and glass beads, chank shells, and brass bells (author's collection). **Bottom:** Detail of the above necklace, showing *deo moni* and brass spacer bars.

Plate IIIB. *Kachin/Naga:* **Top:** Detail of another *Wakching mala* necklace (Harry L. and Tiala Marsosang Neufeld collection; courtesy Harry Neufeld). **Bottom:** *Deo moni/khaji* necklaces.

Plate IIIC. *Kachin/Naga:* **Top:** Indo-Pacific "core" beads in a *khaji* necklace. **Bottom:** Lynggam beads from Lashongthiang village, West Khasi Hills, Northeast India (March 2009).

Plate IIID. *Kachin/Naga:* "A distinctive feature of the Lynggam women is the very large blue bead necklaces they wear. They put on such a large number as to give them almost the appearance of wearing horse collars." (Gurdon 1914:22; pl. op. 194).

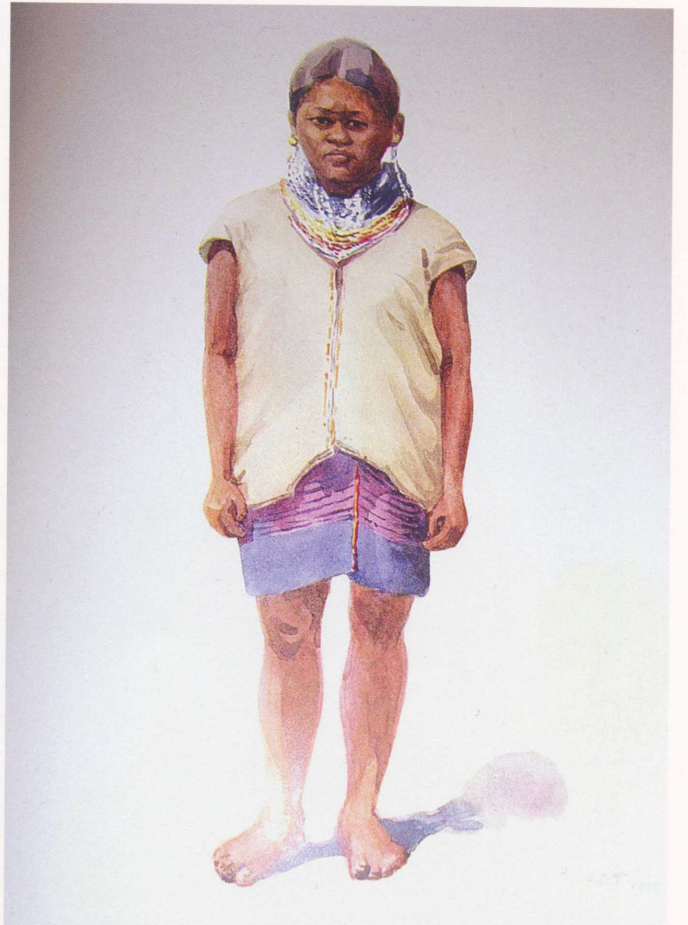




Plate IVA. *Kachin/Naga:* Lynggam matriarch wearing her heirloom beads in Lashongthiang village, West Khasi Hills, Northeast India; one of only two residents in the village who still retain such beads.